



GMT MONTHLY MEMBERSHIP PROGRESS REPORT

Results as of: 5/31/2020

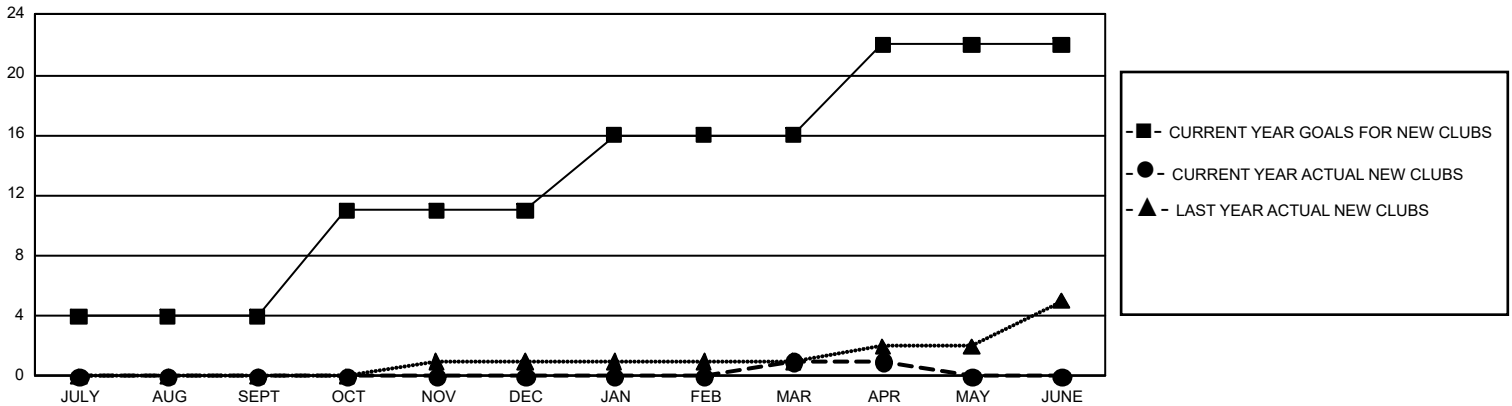
GMT Constitutional Area 1, Group J

GMT: OPEN

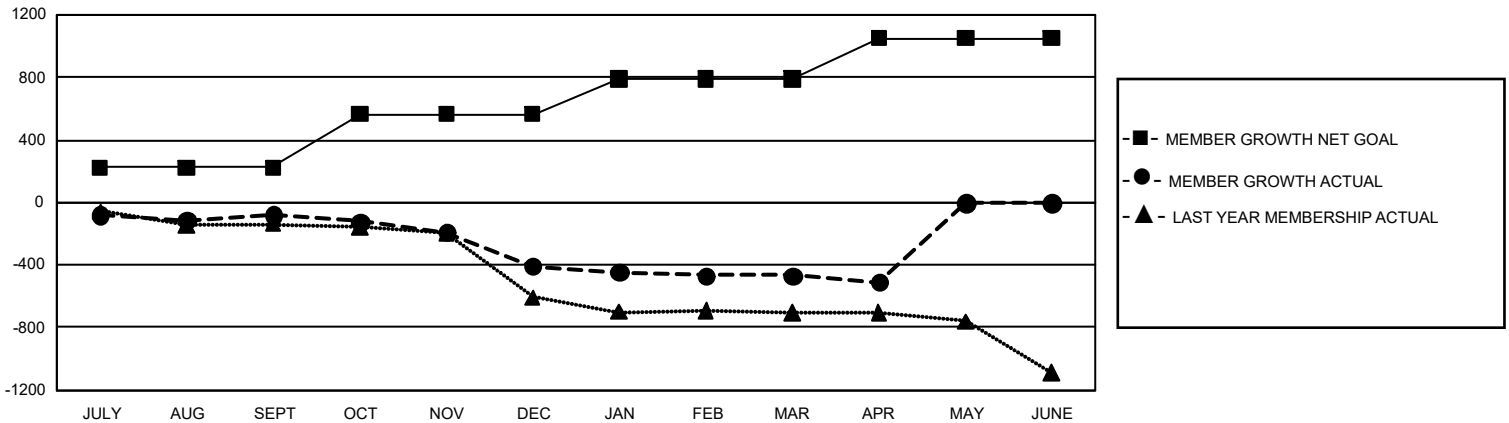
REPORT DOES NOT INCLUDE CLUBS IN UNDISTRICTED AREAS.

Clubs				Members			
RESULTS FOR 2019-2020				RESULTS FOR 2019-2020			
QUARTER	NEW CLUB GOAL	NEW CLUBS	DROPPED CLUBS	QUARTER	MEMBER GROWTH NET GOAL	MEMBER GROWTH ACTUAL	DROPPED MEMBERS ACTUAL (including transfers)
JULY/AUG/SEPT	12	0	2	JULY/AUG/SEPT	669	429	462
OCT/NOV/DEC	21	0	8	OCT/NOV/DEC	1,029	327	637
JAN/FEB/MAR	15	1	3	JAN/FEB/MAR	675	361	399
APR/MAY/JUNE	18	0	0	APR/MAY/JUNE	780	22	56

GOALS AND ACTUAL NEW CLUBS CUMULATIVE



GOALS AND ACTUAL MEMBERS CUMULATIVE



DROPPED CLUBS: 13	362 CLUBS OF 752 ADDED 1 OR MORE NEW MEMBERS	<u>GENDER DISTRIBUTION</u>	
<u>DROPPED MEMBERS</u>		MALE	13,366 (71.48%)
DECEASED	210	FEMALE	5,332 (28.52%)
CLUB CANCELLED	61	TOTAL FAMILY UNIT MEMBERS 3,357	
OTHER	1,281	FAMILY MEMBERS PAYING HALF DUES 1,709	
TOTAL	1,552		

[CLICK HERE FOR CUMULATIVE MEMBERSHIP DATA](#)